

Milking System Works as Promised

Dick Brown, owner of one of the larger dairies in Jefferson County, installed a Copulsation (TM) milking system April 1, 1996.

"As far as I'm concerned," said Dick, "it's probably the best thing I've ever done for this dairy." He has operated Hi-Hope Farm since 1963, and has gradually expanded from 28 to 600 grade Holsteins.

Although during the last year Hi-Hope Farm shipped 22,300 pounds of milk per cow and had been recognized for producing "Super Milk", Dick said, "We were having a lot of mastitis and the teat ends looked like they had been run through a meat grinder."

Some of the employees complained that when they were treating for mastitis and dry treating cows, they would "have to poke around a while and guess which crack was the hole". Dick decided something had to be done.

Having read a few articles about the increased rest phase of Copulsation, the milking system designed, patented and guaranteed by the Gehm family of Lisle, New York, Dick visited Charlie Sullivan's farm in Copenhagen.

Charlie, who had installed Copulsation January 20, allowed Dick to visit the farm on three

Continued on page 16



Note the scabs on the right, front teat of cow #745 prior to installing the Copulsation™ milking system.

16 • Focus on Farming • November 4, 1996

Milking System

different occasions, two weeks apart.

On the third visit, Dick and three employees, with flashlights in hand, examined Sullivan's herd.

Larry Bertram, one of the herdsman at Hi-Hope Farm, said, "By the looks of the healed tissue on the teat ends of some cows, you could see they were at one time quite a mess."

After seeing the improvement in Sullivan's herd, Dick said, "I called Gehm's up and asked them how quick they could get Copulsation put in here."

Just two days later, Copulsation was installed on Hi-Hope Farm. "At the end of the first week I could tell there was healing going on," said Dick. "The second week was better, and by the end of the third week, the improvement was unbelievable."

After five months Dick said, "I've never seen the herd look as good as it does today."

"The teat ends being healed sure makes a difference in our day," said employee Steve Wagar. "Copulsation works good," said Mark Broadhurst, "there's no more scabs."

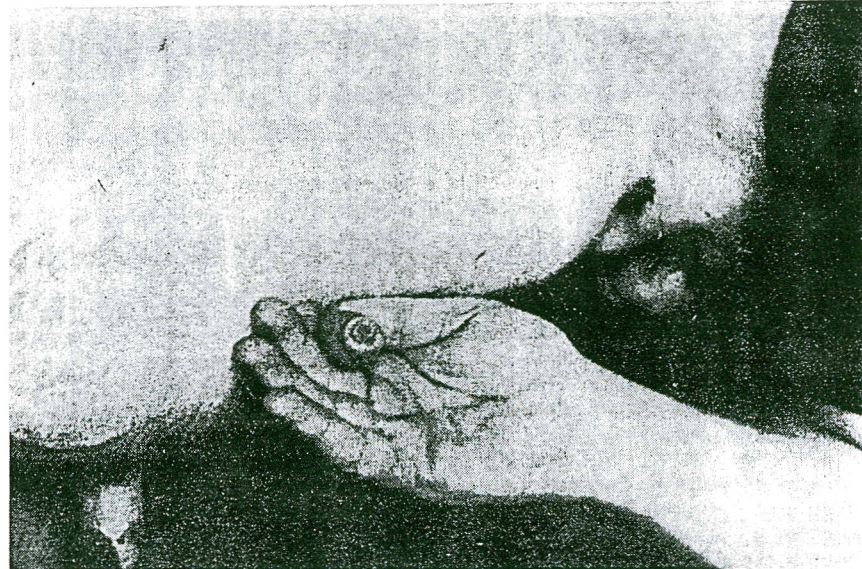
The incidence of mastitis has dropped from 5-6 quarters a day to 5-6 quarters a month. Rich Broadhurst was impressed with the fact that the milk now just squirts out of the tests. "Before, we'd have to break the scabs off to get it," he said.

"I'm awfully pleased with the results we've gotten," said Dick, who noted that as an added bonus their somatic cell count had also dropped.

Because the farm was running a cell count of 140-160,000, they did not expect that count to drop any further. However, their somatic cell count is now under 100,000.

"It's done exactly what I hoped it would do," said Dick, "it's the best money I've ever spent."

The Copulsation (TM) milking system is manufactured by LR Gehm, LLC of Lisle, New York. The company can be contacted at (607) 849-3880.



Note the healed tissue on the right, front teat of cow #745 just 5 months after installing the Copulsation™ milking system.

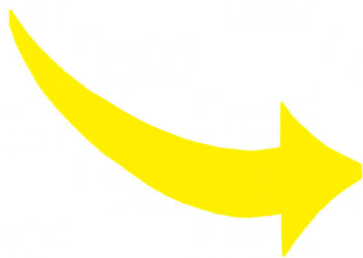
What is the condition of the teat ends on your cows?



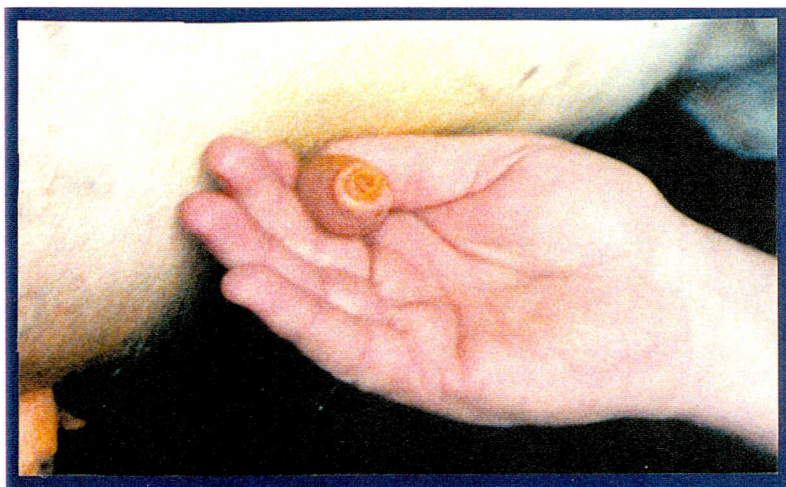
- calloused
- rough
- opening hard to find
- poor milk out

Typical teat end prior to Copulsation™ Milking System

Make a difference with the Copulsation™ Milking System!



- smooth, healthy teat ends
- opening easy to find
- excellent milk performance



Teat end with Copulsation™ Milking System



LR GEHM
Copulsation™ Milking System